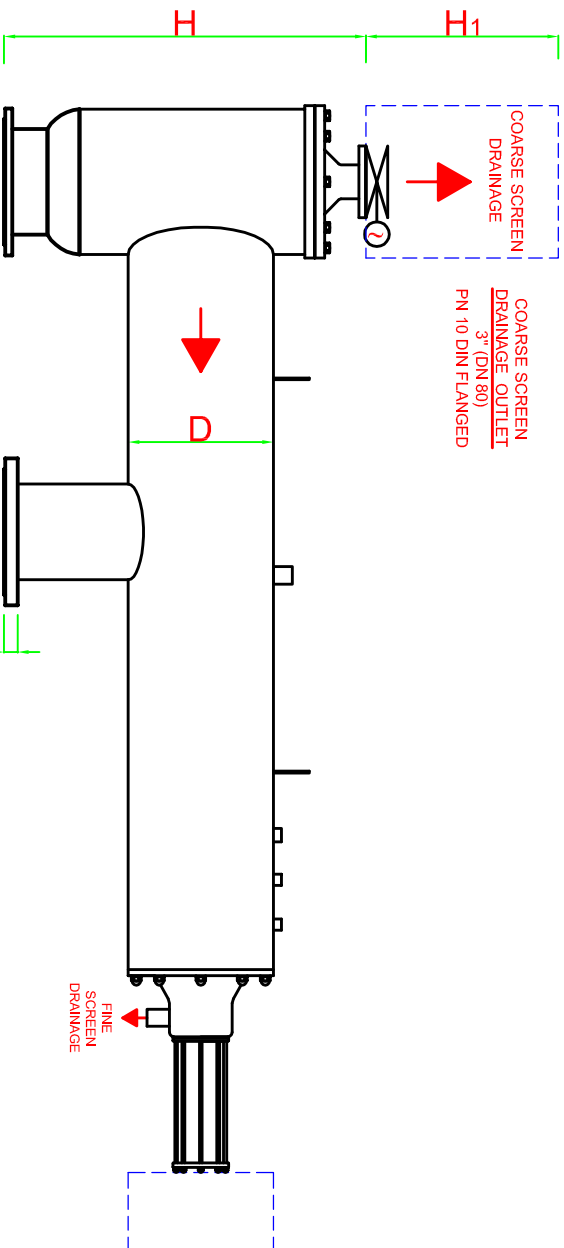
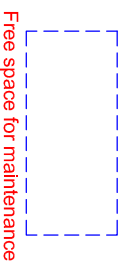
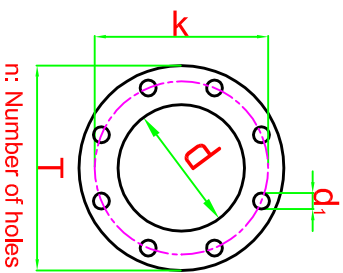


## DATA SHEET



For high pressure, high temperature and different materials, custom made filters can be produced.

Body Material:	AISI 304L (316L optional)
Screen Material:	AISI 316L
Max. Operating Pressure:	10 bar
Min. Inlet Pressure Required During Back-Flush:	2 bar
Max. Operating Temperature:	60 °C
Headloss at Max. Flow Rate:	0.2 bar
Approximate Back-Flush Time:	20-30 sec.
Approximate Back-Flush Water Consumption:	150-200 l/back-flush
Coarse Screen Back-Flush Outlet:	Automatic valve
Fine Screen Control System:	Electric
Coarse Screen Control System:	Electric

FILTER MODELS	INLET/OUTLET	FLANGE SIZES ND 10 - DIN 2576						A min.	C	D	E	H	H1	L	L1	F	WEIGHT(kg)		MAX. FLOW RATE m <sup>3</sup> /h	FILTRATION AREA cm <sup>2</sup>			
		d	T	k	d1	n	t										FULL	EMPTY					
KFH 112608	inch DN	8	200	219.1	340	295	22	8	24	900	1220	12"	340	680	865	2625	1700	4325	420	185	320	3900	7200

All dimensions are in millimeters.

Amiel-Flemox reserves the rights to modify any of the technical information in this document without prior notification. All the rights for this drawing are belonging to AMIEL\_TREATMENT SYSTEM CONS.INDR.COM.CO.INCIt can not be copied or given to the persons without permission.

