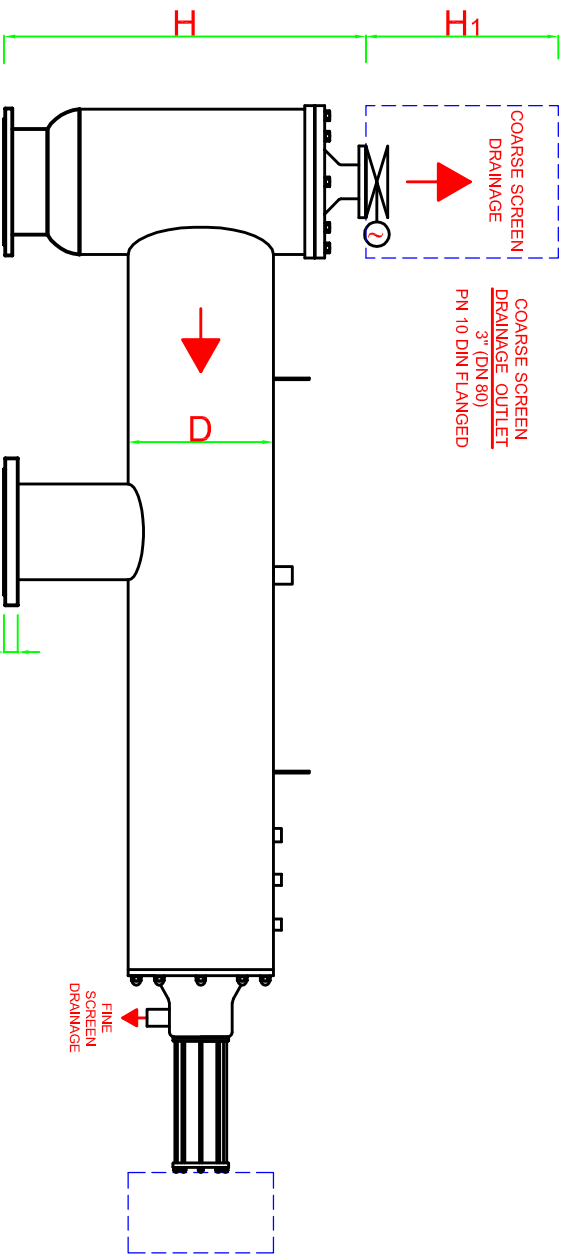
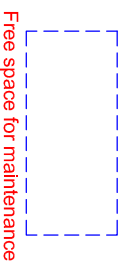
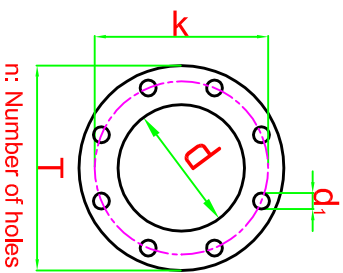


DATA SHEET



For high pressure, high temperature and different materials, custom made filters can be produced.

Body Material:	AISI 304L (316L optional)
Screen Material:	AISI 316L
Max. Operating Pressure:	10 bar
Min. Inlet Pressure Required During Back-Flush:	2 bar
Max. Operating Temperature:	60 °C
Headloss at Max. Flow Rate:	0.2 bar
Approximate Back-Flush Time:	20-30 sec.
Approximate Back-Flush Water Consumption:	150-200 l/back-flush
Coarse Screen Back-Flush Outlet:	Automatic valve
Fine Screen Control System:	Electric
Coarse Screen Control System:	Electric

FILTER MODELS	INLET/OUTLET		FLANGE SIZES ND 10 - DIN 2576						A min.	C	D	E	H	H1	L	L1	F	WEIGHT(kg)		MAX. FLOW RATE m ³ /h	FILTRATION AREA cm ²	
	inch	DN	d	T	k	d1	n	t										FULL	EMPTY			
KFH 112610	10	250	273.1	395	350	22	12	26	900	1220	12"	340	705	835	2655	1700	4325	430	190	400	4100	7200

All dimensions are in millimeters.

Antel-Fitemox reserves the rights to modify any of the technical information in this document without prior notification. All the rights for this drawing are belonging to ANTEL_TREATMENT SYSTEM CONS.INDRCOM.CO.INCIt can not be copied or given to the persons without permission.

