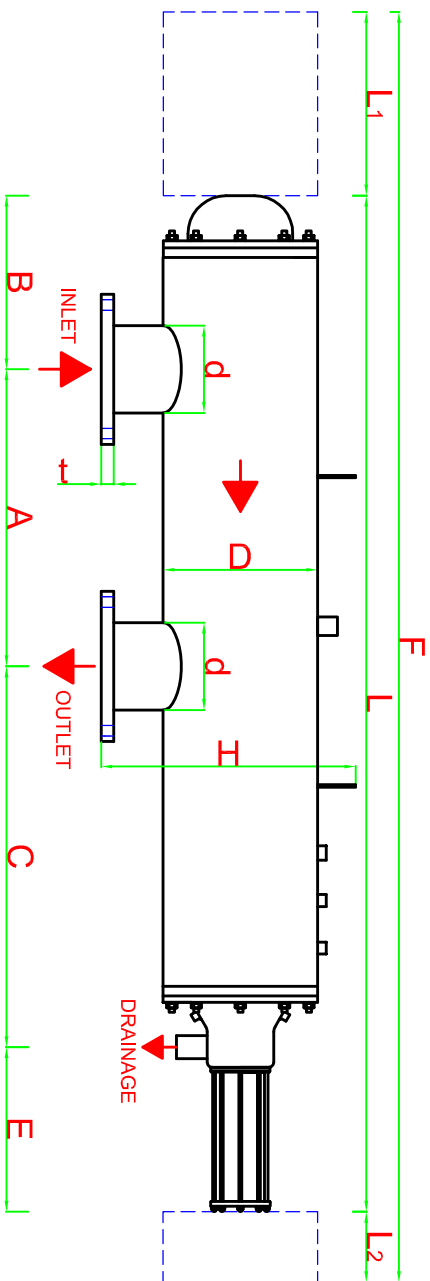
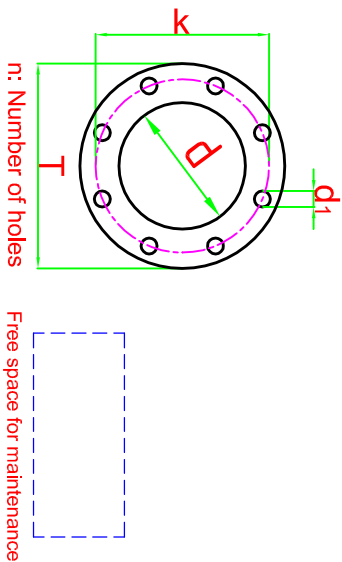


DATA SHEET



For high pressure, high temperature and different materials, custom made filters can be produced.

Body Material:	AISI 304L (316L optional)
Screen Material:	AISI 316L
Max. Operating Pressure:	10 bar
Min. Inlet Pressure Required During Back-Flush:	2 bar
Max. Operating Temperature:	60 °C
Headloss at Max. Flow Rate:	0.2 bar
Approximate Back-Flush Time:	20-30 sec.
Approximate Back-Flush Water Consumption:	150-200 l/back-flush
Control System:	Hydraulic or Electric

FILTER MODEL	INLET/OUTLET		FLANGE SIZES NID 10 - DIN 2576								A	L	L1	L2	F	B	C	E	D	H	WEIGHT (kg)		MAX. FLOW RATE m ³ /h	FILTRATION AREA cm ²
	inch	DN	d	T	k	d1	n	t	min.	FULL											EMPTY			
PFH 110404	4	100	114.3	220	180	18	8	20	900	1975	1300	500	3775	280	455	340	10"	455	175	95	100	4800		

All dimensions are in millimeters.

Aniel-Fitemox reserves the rights to modify any of the technical information in this document without prior notification. All the rights for this drawing are belonging to ANIEL TREATMENT SYSTEM CONS.INDRCOM.CO.INCIt can not be copied or given to the persons without permission.

