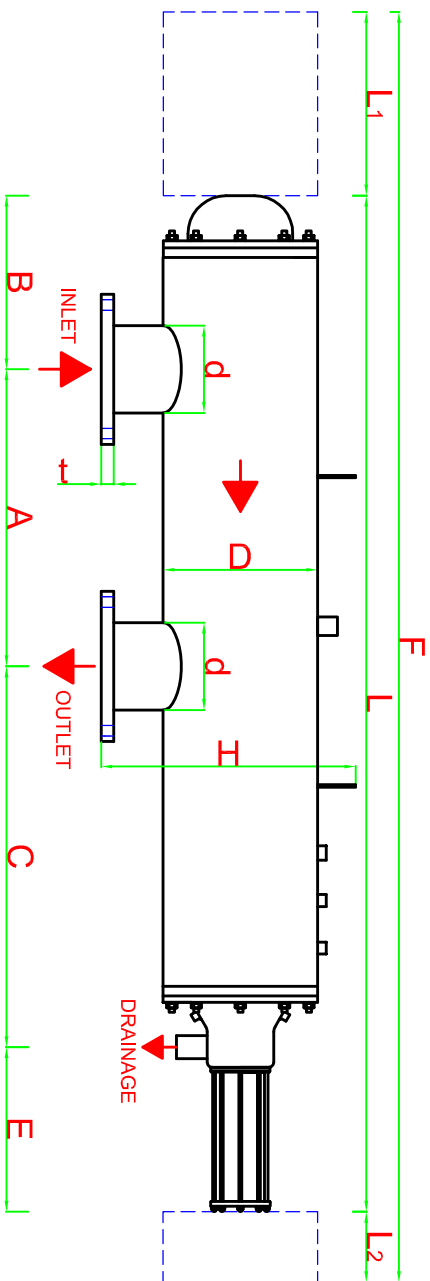
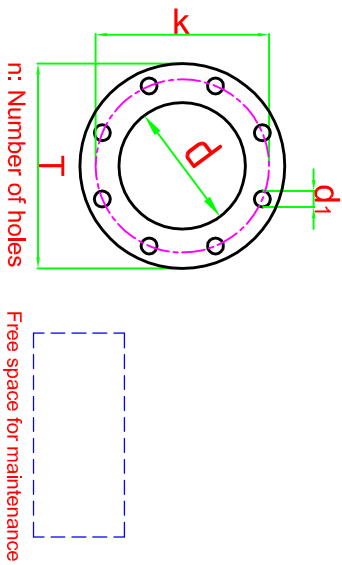


DATA SHEET



For high pressure, high temperature and different materials, custom made filters can be produced.

Body Material:	AISI 304L (316L optional)
Screen Material:	AISI 316L
Max. Operating Pressure:	10 bar
Min. Inlet Pressure Required During Back-Flush:	2 bar
Max. Operating Temperature:	60 °C
Headloss at Max. Flow Rate:	0.2 bar
Approximate Back-Flush Time:	20-30 sec.
Approximate Back-Flush Water Consumption:	150-200 l/back-flush
Control System:	Hydraulic or Electric

FILTER MODEL	INLET/OUTLET		FLANGE SIZES NID 10 - DIN 2576								A	L	L1	L2	F	B	C	E	D	H	WEIGHT (kg)		MAX. FLOW RATE m <sup>3</sup> /h	FILTRATION AREA cm <sup>2</sup>
	inch	DN	d	T	k	d1	n	t	min.	FULL											EMPTY			
PFH 112608	8	200	219.1	340	295	22	8	24	900	2590	1700	500	4790	390	960	340	12"	530	310	140	320	7200		

All dimensions are in millimeters.

Aniel-Fitemox reserves the rights to modify any of the technical information in this document without prior notification. All the rights for this drawing are belonging to ANIEL\_TREATMENT SYSTEM CONS.INDRCOM.CO.INCIt can not be copied or given to the persons without permission.

