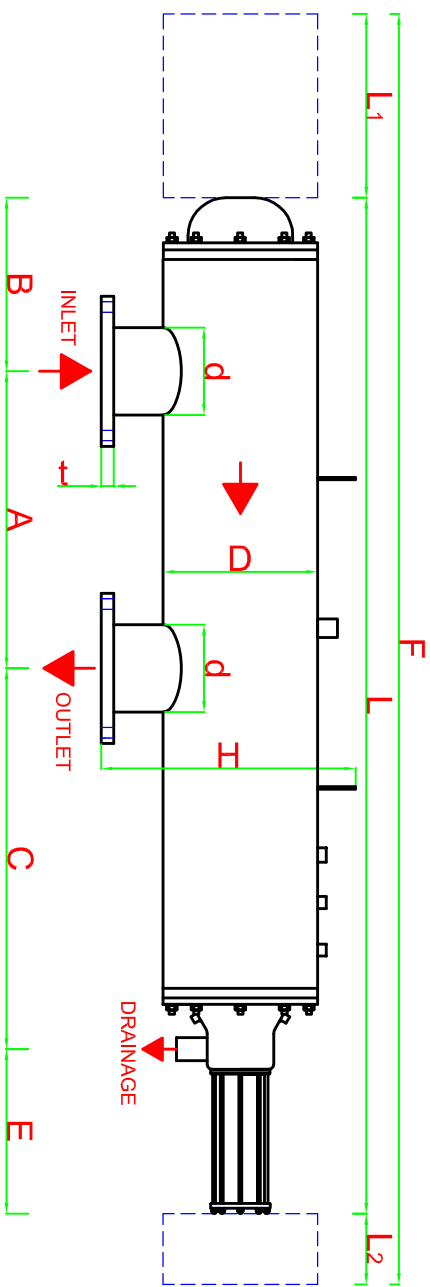
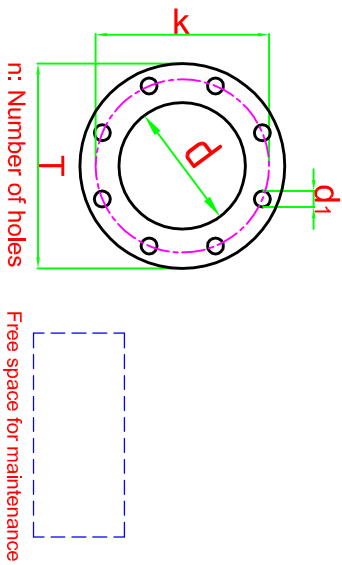


DATA SHEET



For high pressure, high temperature and different materials, custom made filters can be produced.

Body Material:	AISI 304L (316L optional)
Screen Material:	AISI 316L
Max. Operating Pressure:	10 bar
Min. Inlet Pressure Required During Back-Flush:	2 bar
Max. Operating Temperature:	60 °C
Headloss at Max. Flow Rate:	0.2 bar
Approximate Back-Flush Time:	20-30 sec.
Approximate Back-Flush Water Consumption:	150-200 l/back-flush
Control System:	Hydraulic or Electric

FILTER MODEL	INLET/OUTLET		FLANGE SIZES NID 10 - DIN 2576												A	L	L ₁	L ₂	F	B	C	E	D	H	WEIGHT (kg)		MAX. FLOW RATE		FILTRATION AREA
	inch	DN	d	T	k	d ₁	n	t	min.	min.	min.	min.	min.	min.											min.	min.	min.	min.	
PFH 112610	10	250	273.1	395	350	22	12	26	900	2590	1700	500	4790	390	960	340	12"	535	325	150	400	7200							

All dimensions are in millimeters.

Aniteh-Fitemox reserves the rights to modify any of the technical information in this document without prior notification. All the rights for this drawing are belonging to ANITEL_TREATMENT SYSTEM CONS.INDRCOM.CO.INCIt can not be copied or given to the persons without permission.