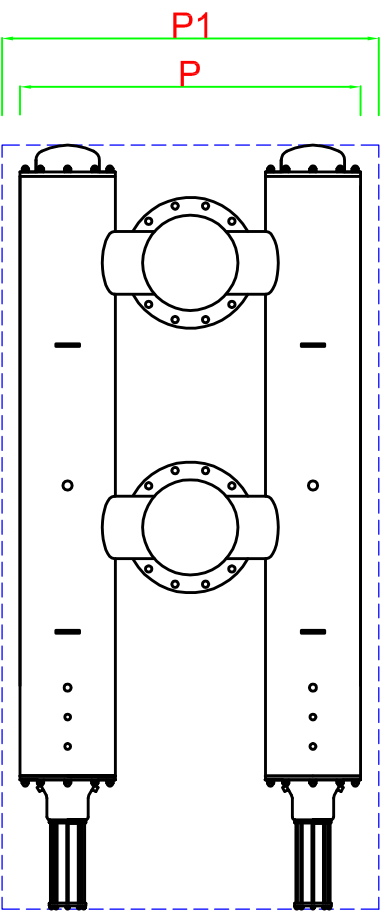
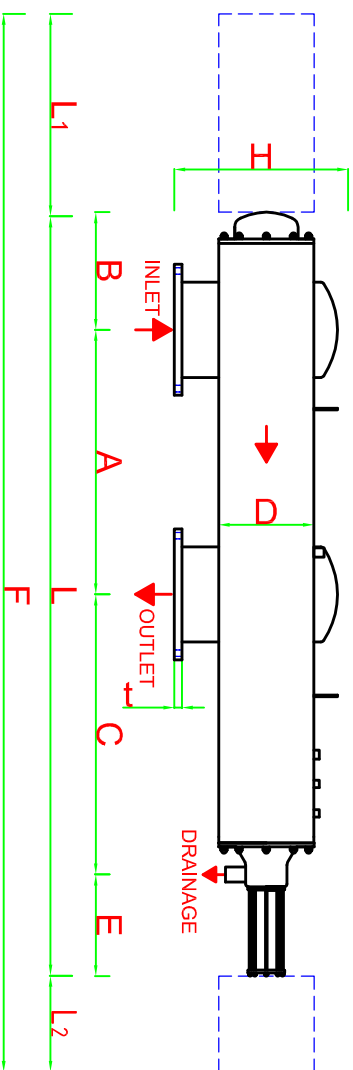
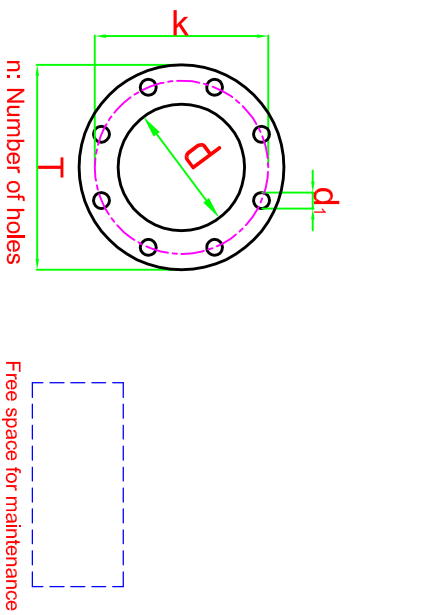


DATA SHEET



For high pressure, high temperature and different materials, custom made filters can be produced.

Body Material:	AISI 304L (316L optional)
Screen Material:	AISI 316L
Max. Operating Pressure:	10 bar
Min. Inlet Pressure Required During Back-Flush:	2 bar
Max. Operating Temperature:	60 °C
Headloss at Max. Flow Rate:	0.2 bar
Approximate Back-Flush Time:	40-60 sec.
Approximate Back-Flush Water Consumption:	300-400 l/back-flush
Control System:	Hydraulic or Electric

FILTER MODEL	INLET/OUTLET		FLANGE SIZES ND 10 - DIN 2576						A min.	L	L ₁	L ₂	F	B	C	E	D	H	P	P ₁	WEIGHT (kg)		MAX. FLOW RATE	FILTRATION AREA
	inch	DN	d	T	k	d ₁	n	t													FULL	EMPTY		
PTW 210408	8	200	219.1	340	295	22	8	24	900	1975	1300	500	3775	280	455	340	10"	490	1075	1875	525	220	320	9600

All dimensions are in millimeters.

Antel-Fitemox reserves the rights to modify any of the technical information in this document without prior notification. All the rights for this drawing are belonging to ANTEL_TREATMENT SYSTEM CONS.INDRCOM.CO.INCIt can not be copied or given to the persons without permission.

