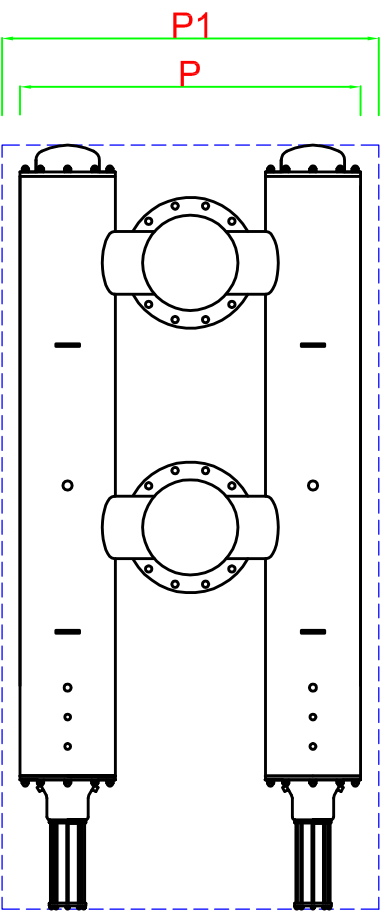
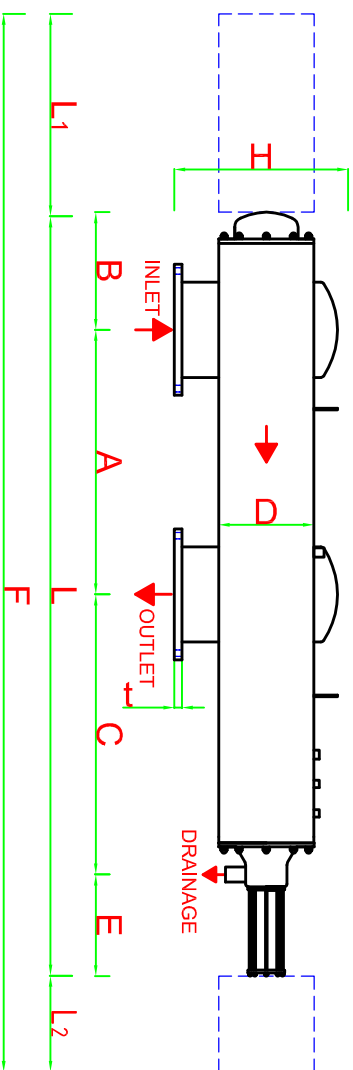
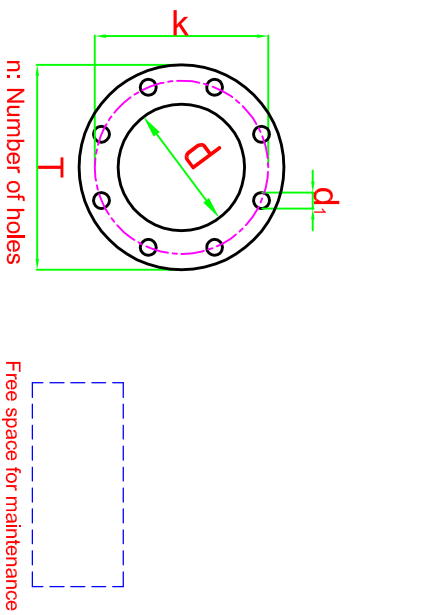


DATA SHEET



For high pressure, high temperature and different materials, custom made filters can be produced.

Body Material:	AISI 304L (316L optional)
Screen Material:	AISI 316L
Max. Operating Pressure:	10 bar
Min. Inlet Pressure Required During Back-Flush:	2 bar
Max. Operating Temperature:	60 °C
Headloss at Max. Flow Rate:	0.2 bar
Approximate Back-Flush Time:	40-60 sec.
Approximate Back-Flush Water Consumption:	300-400 l/back-flush
Control System:	Hydraulic or Electric

FILTER MODEL	INLET/OUTLET		FLANGE SIZES ND 10 - DIN 2576						A min.	L	L1	L2	F	B	C	E	D	H	P	P1	WEIGHT (kg)		MAX. FLOW RATE	FILTRATION AREA
	inch	DN	d	T	k	d1	n	t													FULL	EMPTY		
PTW 210606	6	150	168,2	285	240	22	8	22	900	2455	1700	500	4655	320	895	340	10"	430	1025	1825	615	240	250	14400

All dimensions are in millimeters.

Antel-Fitemox reserves the rights to modify any of the technical information in this document without prior notification. All the rights for this drawing are belonging to ANTEL\_TREATMENT SYSTEM CONS.INDRCOM.CO.INCIt can not be copied or given to the persons without permission.

