



FMS & FMS-W-MR

Compact Design for Low Flow Systems



+ Filternox® FMS series filters are manufactured for low-flow applications and motorized filters equipped with a brush for self-cleaning during back-flush.

+ FMS & FMS-W-MR are especially suitable for prefiltration and final filtration of water sources containing inorganic dirt loads.

+ Filternox® brushed mini-screen models are controlled by ΔP and timer.



General Technical Specifications

Body Material AISI 304L, AISI 316L	Max. Operating Temperature 60°C / 90°C	Back-Flush Water Consumption 40-50 l / back-flush
Screen Material AISI 316L	Headloss at Max. Flow Rate 0.2 bar	Fine Screen Range 10-3000 micron
Max. Operating Pressure PN10 / PN16	Back-Flush Time 15-20 s	Control System Electric
Min. Inlet Pressure Required During Back-Flush 1 bar	rpm of Cleaning Mechanism Adjustable	

For different pressure and material requirements, please contact Filternox.

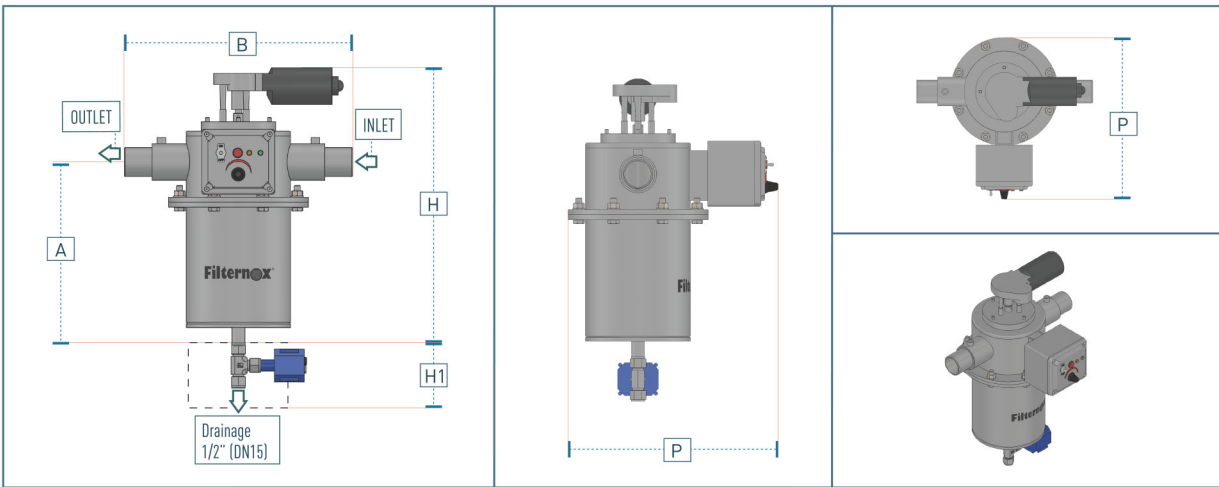
Optional Features

Alternative Energy Sources
Solar Energy

Remote Control and Monitoring
PLC, PC,
Mobile Devices,
Filternox Head Office



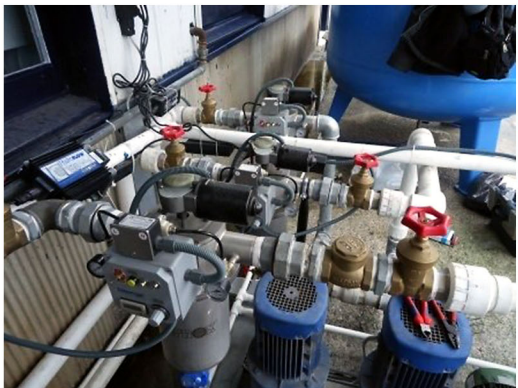
FMS Model Dimensions



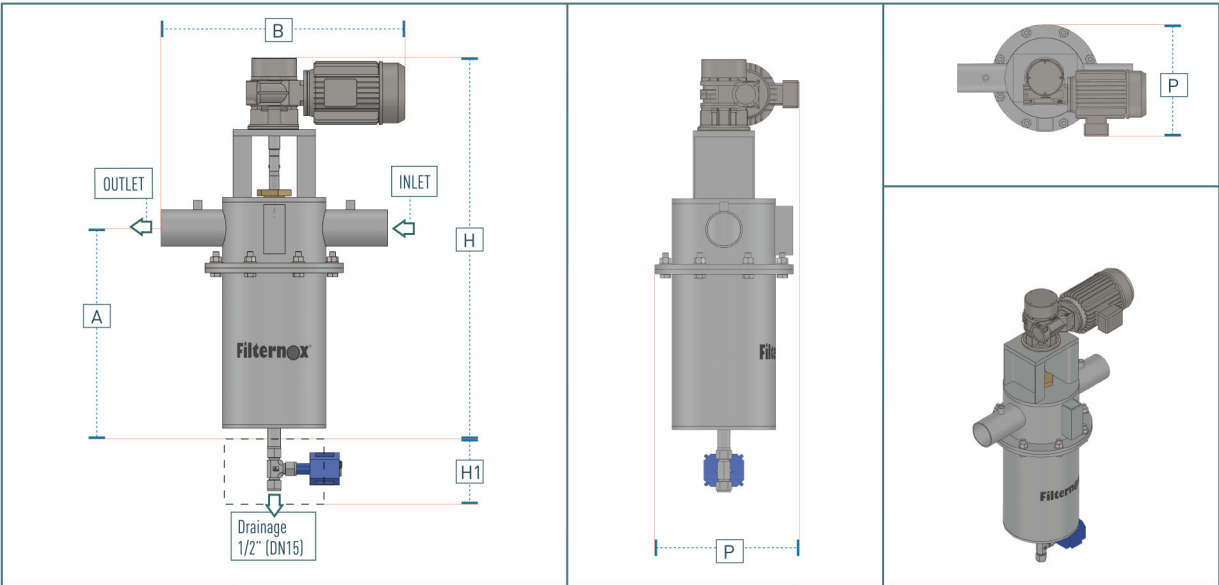
Model	Inlet-Outlet Diameter		Dimensions					Weight		Flow Rate	Filtration Area
			A	B	H	H1	P	Empty	Full		
	inch	mm	mm					kg		m³/h	cm²
FMS 106101	1	25	243	368	405	250	340	11	19	up to 15	350
FMS 106101.5	1½	40	303	368	465	250	340	12	20	up to 20	600
FMS 106102	2	50	363	368	525	250	340	13	21	up to 30	850
FMS 108103	3	80	378	459	560	250	440	22	33	up to 50	1250

The tolerance value for given data is according to DIN ISO 2768-1(v).

For larger filtration area, please contact Filternox.



FMS-W-MR Model Dimensions



Model	Inlet-Outlet Diameter		Dimensions					Weight		Flow Rate	Filtration Area
			A	B	H	H1	P	Empty	Full		
	inch	mm	mm					kg		m³/h	cm²
FMS-W 108101-MR	1	25	363	520	670	250	280	37	48	up to 15	1250
FMS-W 108102-MR	2	50	363	520	670	250	280	39	51	up to 30	1250
FMS-W 108103-MR	3	80	378	530	700	250	280	42	55	up to 50	1250

The tolerance value for given data is according to DIN ISO 2768-1(v).

For larger filtration area, please contact Filternox.

