

applications



[www.filternox.com](http://www.filternox.com)



## steel industry and nozzle protection

The quality of cooling water is crucial for the manufacturing of high quality steel. If cooling water contains particles which clog the spray nozzles, this will lower the quality of the end product. This may also lead to serious losses in production due to the unscheduled shut down of production lines.

**Filternox®** Automatic Self-Cleaning Filters, by the removal of particles contained in the cooling water, provide a perfect solution to prevent clogging of the nozzles and to maintain continuous production.

In addition, **Filternox®** special “high energy back-flushing system” avoids screen blockages from oil and grease in the cooling water of the steel industry.

### application model



For further information about **Steel Industry and Nozzle Protection Applications** please visit our website. You can use the QR Code on the right to access online information about the application.

[www.filternox.com/#filtration](http://www.filternox.com/#filtration)



the solution in filtration

---

**steel industry & nozzle  
protection applications**



**Steel Industry, Cooling Water Filtration**



**Steel Industry, Nozzle Protection Filtration**



**Steel Industry, Nozzle Protection Filtration**



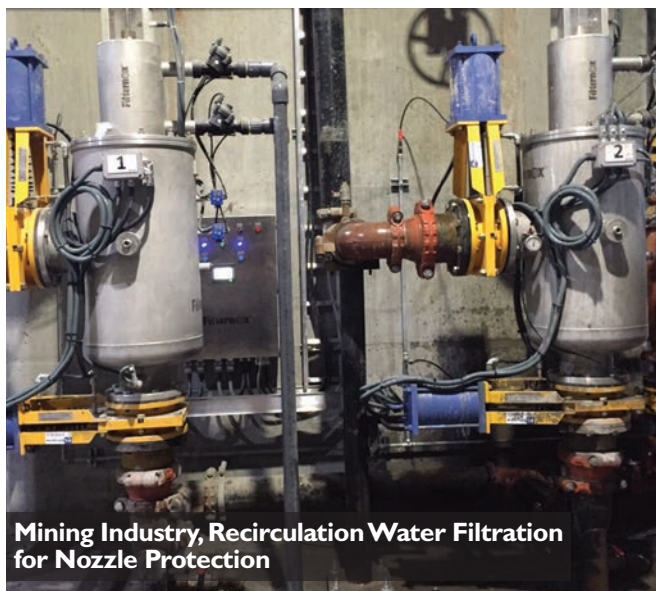
**Steel Industry, Cooling Water Filtration**







**Nozzle Protection Filtration**



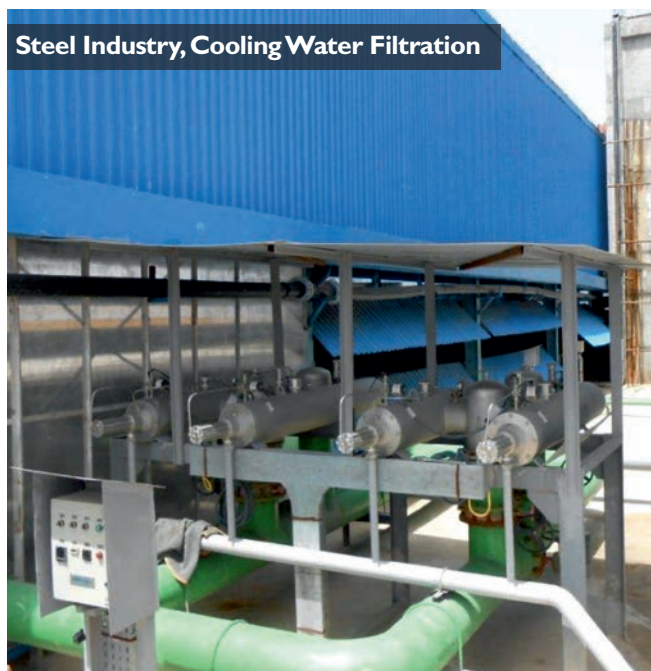
**Mining Industry, Recirculation Water Filtration for Nozzle Protection**



**Steel Industry, Nozzle Protection Filtration**



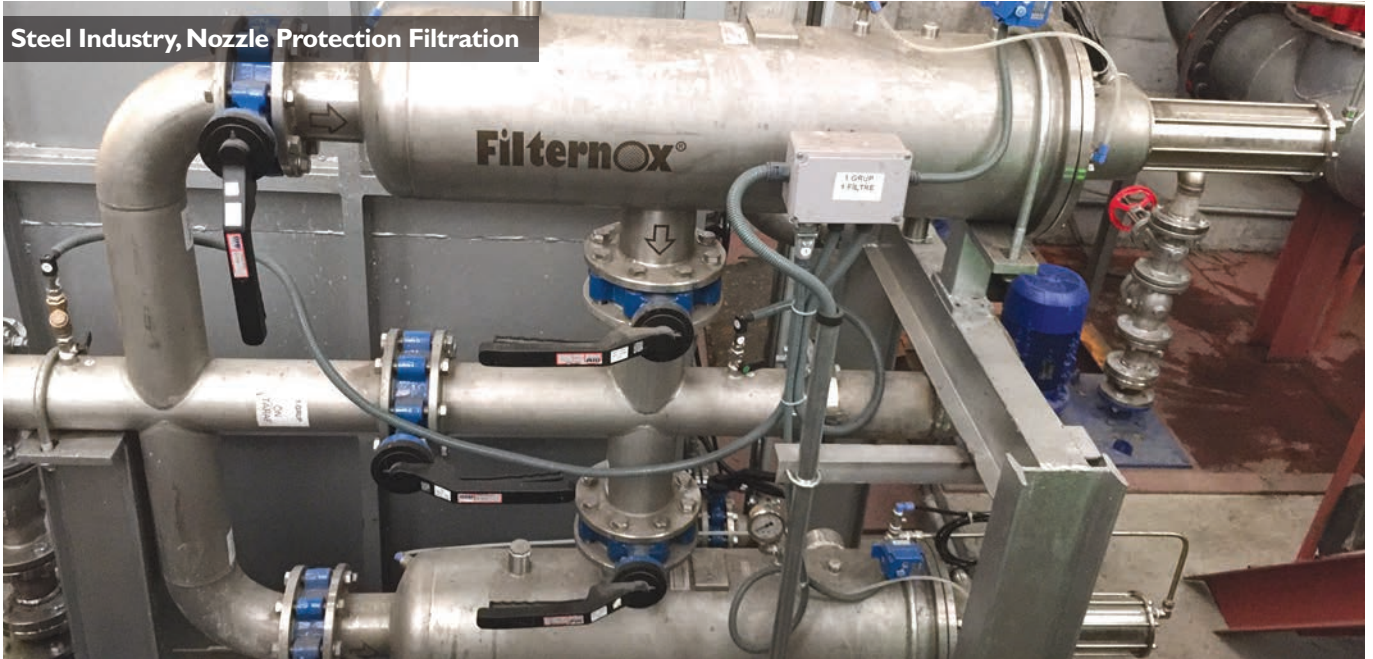
**Steel Industry, Nozzle Protection Filtration**



**Steel Industry, Cooling Water Filtration**



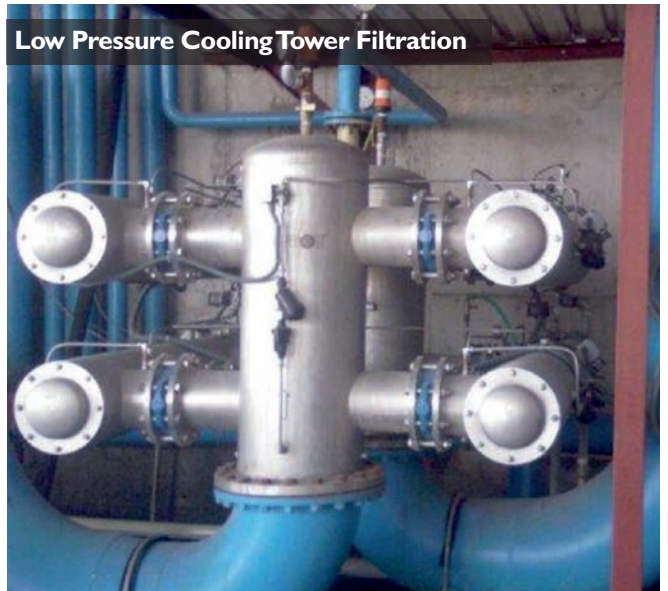
**Steel Industry, Nozzle Protection Filtration**



**Rolling Mill Water Filtration**



**Low Pressure Cooling Tower Filtration**



**Steel Industry, Nozzle Protection Filtration**





**Filternox Europe S.L.**  
C/ Plus Ultra, nº29 46006 Valencia- Spain  
T+34 960 083 911  
[www.filternox.com](http://www.filternox.com)

