



sea water

Filternox® offers special models for different type of sea water applications.

KFH series have both coarse and fine filtration stages in one body and both featuring an independent automatic self-cleaning system.

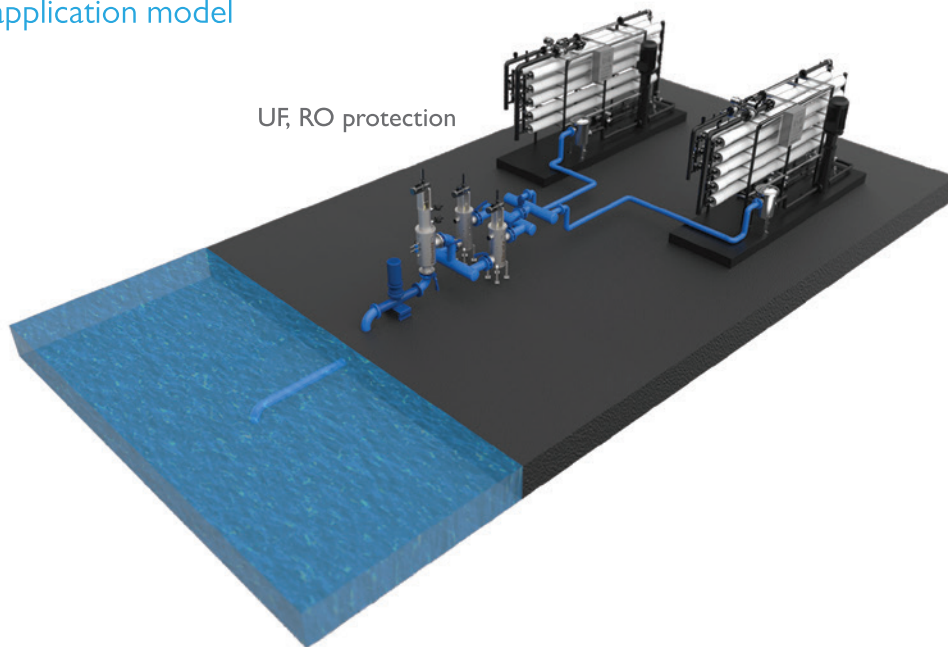
SPT-WBV-MR models provide high performance with its unique design having double effect cleaning system on one single screen.

The size of particles contained in sea water varies widely. Therefore sea water filtration needs more care than other fluids. A very special filtration solution is required to remove particles from 10 mm at one end of the spectrum down to 50 microns particles at the other. This kind of water needs to be filtered in order to remove coarse and fine particles at the same time.

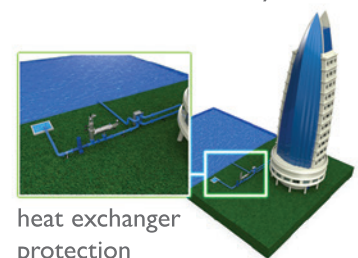
Filternox® Automatic Self-Cleaning Filters are used for sea water filtration on oil platforms, the protection of heat exchangers, ultra filtration and Reverse Osmosis units as well as recreational usages.

Another important consideration in the filtration of sea water is the corrosive effect it has. **Filternox®** offers the best permanent solution with a rubber coating over its stainless steel body.

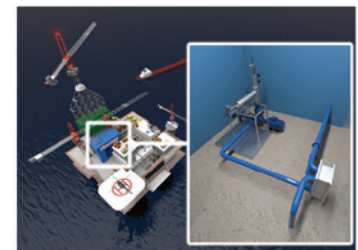
application model



Sea water use for utility



heat exchanger protection



oil platform

For further information about **Sea Water Applications** please visit our website. You can use the QR Code on the right to access online information about the application.

www.filternox.com/#filtration



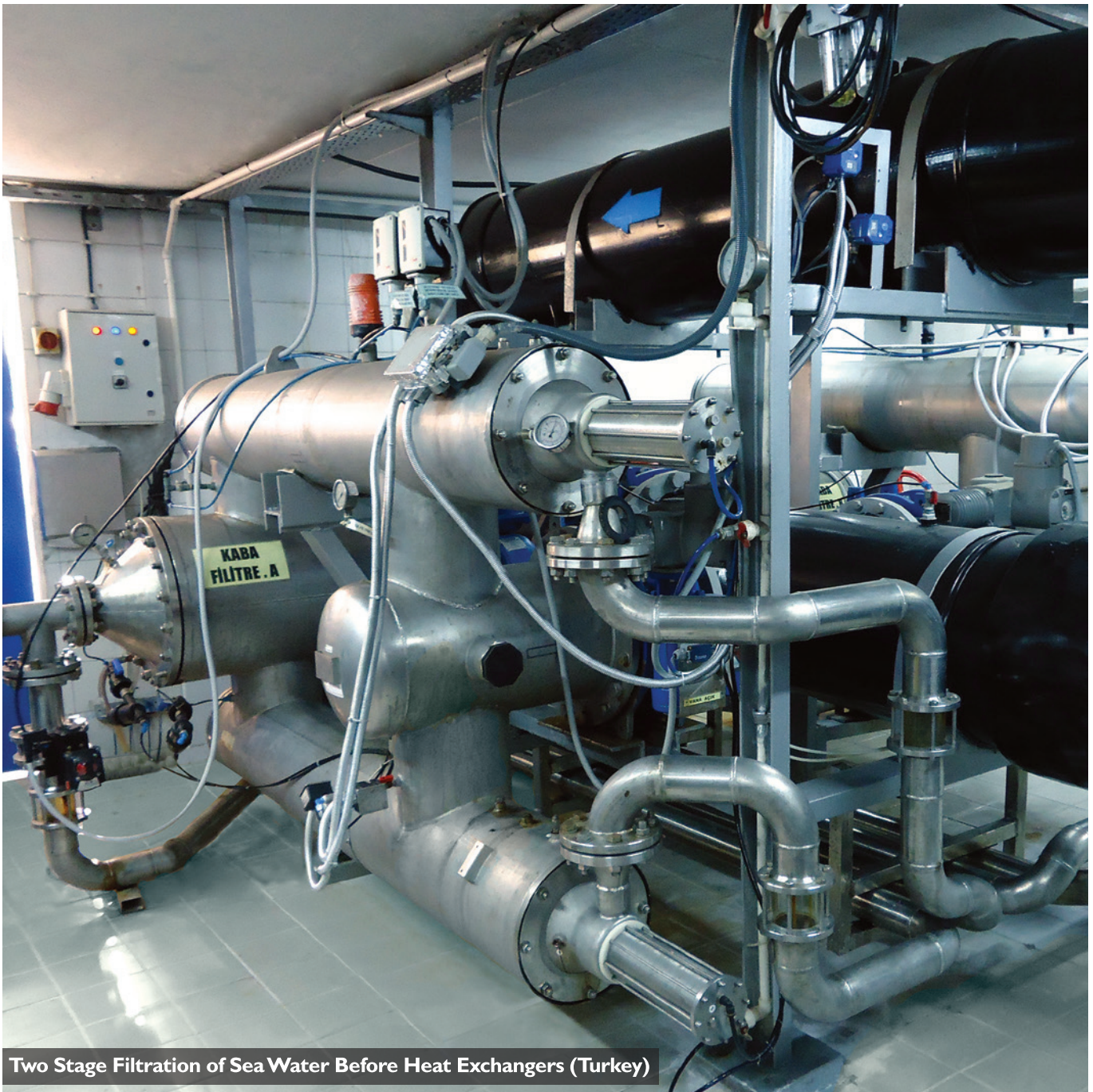
the solution in filtration

**sea water
applications**

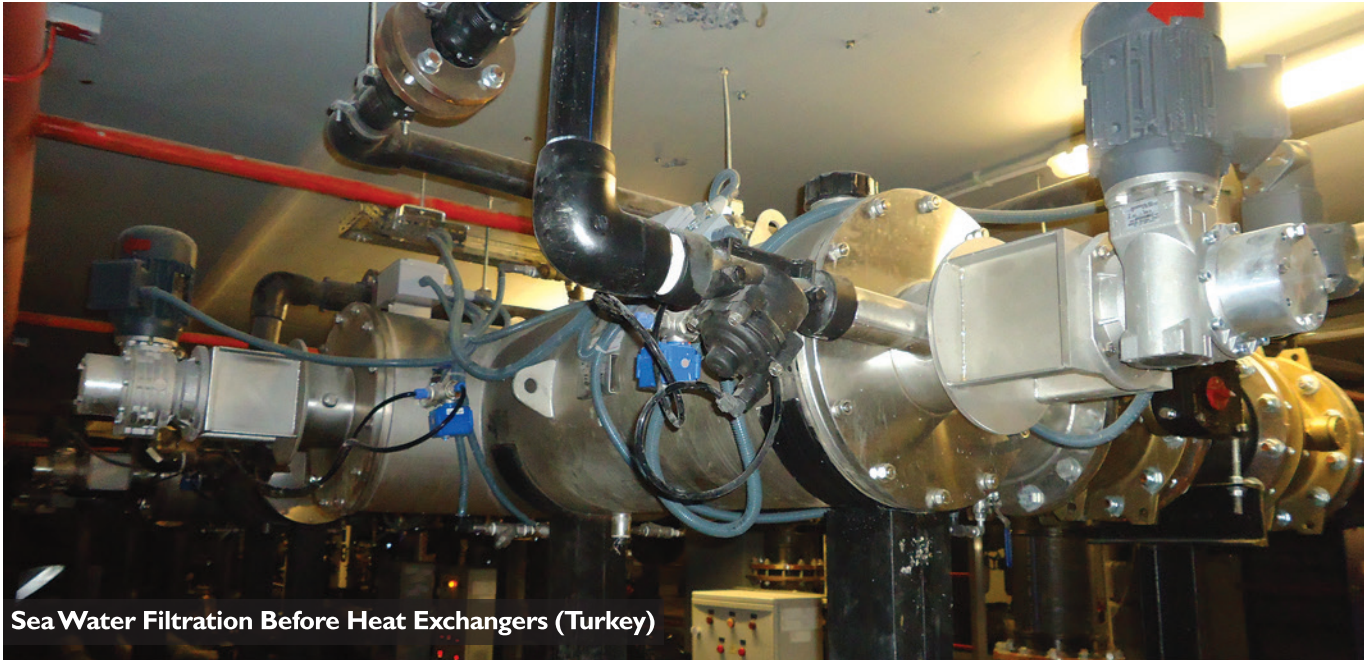
Sea Water Filtration Prior RO (Italy)



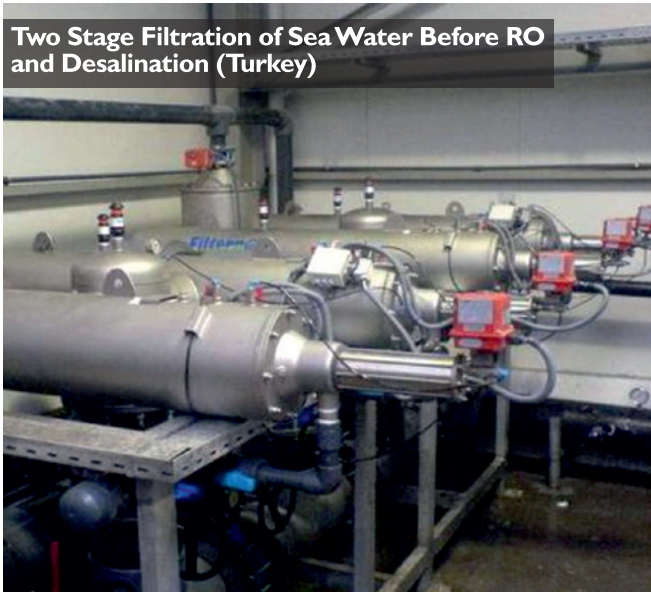
Two Stage Filtration of Sea Water Before RO and Desalination (Turkey)



Two Stage Filtration of Sea Water Before Heat Exchangers (Turkey)



Sea Water Filtration Before Heat Exchangers (Turkey)



Two Stage Filtration of Sea Water Before RO and Desalination (Turkey)



Two Stage Filtration of Sea Water Before RO and Desalination (Kingdom of Saudi Arabia)



Sea Water Filtration Before Heat Exchanger (Turkey)

